

TRAVEL SAFE DELAWARE: An Action Plan for Safe Streets

Appendix B. Strategies and Action Items

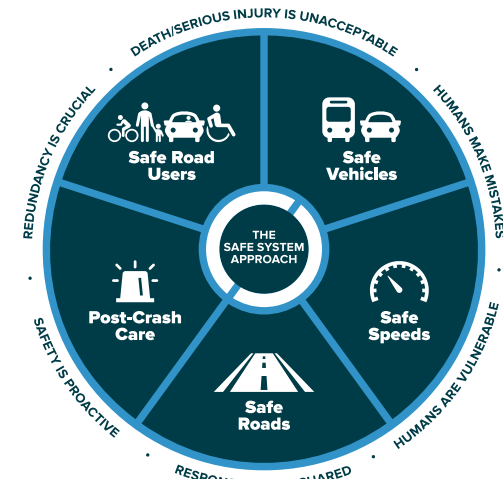
TRAVEL SAFE DELAWARE: Safety Action Plan

The following Action Plan is the foundation for implementation of the Delaware Safety Action Plan. This Action Plan identifies specific strategies and action items for the City of Delaware to implement in collaboration with key public and private, local and regional stakeholders in the effort to reach zero fatalities and serious injuries.

The strategies and action items are organized around the five Safe System principles to ensure a holistic approach to safety across the entire transportation system.

The five principles include:

1. Safe Road Users
2. Safe Speeds
3. Safe Roads
4. Post-Crash Care
5. Safe Vehicles



Source: FHWA

Action items in the plan are organized in the following structure:

Action Item	Progress Measure	Timeframe	Partners
Description of the action item intended to implement the strategy.	Potential steps to complete and measure progress on action item.	Estimated timeframe for implementing action item: <ul style="list-style-type: none"> • Short-term: less than 2 years • Mid-term: 2 to 5 years • Long-term: more than 5 years 	Potential partners for the City of Delaware (Public Works Department) to engage in implementation of the action item.

Safe Road Users

Strategy: Encourage safe and responsible behavior for all road users through strategic education, engagement, and enforcement initiatives.

Action Item	Progress Measure	Timeframe	Partners
Collaborate with relevant partners to engage in and promote events, activities, and messaging focused on priority safety challenges.	<ul style="list-style-type: none"> Regular coordination with partners Number of events promoted/hosted 	Short-term (0-2 years)	<ul style="list-style-type: none"> Delaware Police Department SAFE Delaware County Coalition Delaware City Schools
Explore the potential to establish drivers' education classes for students in Delaware high schools.	<ul style="list-style-type: none"> Number of students and/or parents who are interested in drivers' education courses in schools Number of community members that support the program Number of classes/programs established? 	Mid-term (2-5 years)	<ul style="list-style-type: none"> Delaware City Schools/Delaware Board of Education Delaware City Schools PTA Driving academies in Delaware Ohio Department of Public Safety SAFE Delaware County Coalition
Collaborate with relevant partners to increase access to programs that improve transportation access and safety for older adults	<ul style="list-style-type: none"> Number of older adults reached 	Mid-term (2-5 years)	<ul style="list-style-type: none"> Central Ohio Agency on Aging SourcePoint Delaware Delaware County Transit SAFE Delaware County Coalition
Explore the potential to adopt strong local legislation regarding distracted driving.	<ul style="list-style-type: none"> Review existing legislation Identify enforcement challenges and opportunities Determine appropriate next steps 	Short-term (0-2 years)	<ul style="list-style-type: none"> Mid-Ohio Regional Planning Commission Delaware Police Department
Partner with the Delaware Police Department to host strategic enforcement events intended to highlight roadway safety challenges and educate motorists.	<ul style="list-style-type: none"> Materials shared with motorists OR number of motorists reached through events Number of strategic enforcement events held 	Short-term (0-2 years)	<ul style="list-style-type: none"> Delaware Police Department SAFE Delaware County Coalition Ohio Department of Public Safety
Share existing educational materials and create new material where needed regarding rules of the road, safe driving habits, and any new infrastructure, legislation, etc.	<ul style="list-style-type: none"> Determine what needs are currently unmet with existing materials Identify new opportunities for promotion 	Mid-term (2-5 years)	<ul style="list-style-type: none"> Delaware Police Department SAFE Delaware County Coalition
Partner with agencies throughout Central Ohio to sponsor traffic safety programs and courses for Delaware residents whose primary language is not English.	<ul style="list-style-type: none"> Number of programs/courses held Number of registrations 	Short-term / ongoing	<ul style="list-style-type: none"> Community Refugee and Immigration Services (CRIS) US Together SAFE Delaware County Coalition

Action Item	Progress Measure	Timeframe	Partners
Create high-impact, short, entertaining safety messages and/or videos for Delaware stakeholders to share on social media and in local newsletters	<ul style="list-style-type: none"> Number of social media impressions 	Short-term / ongoing	<ul style="list-style-type: none"> SAFE Delaware County Coalition Delaware Community Affairs
Establish "Safe Driving Habits" training program and require City employees and contractors operating vehicles on behalf of the City to complete training.	<ul style="list-style-type: none"> Establish training program Number of employees who complete course 	Mid-term (2-5 years)	<ul style="list-style-type: none"> SAFE Delaware County Coalition
Assess the feasibility of implementing a Dangerous Driver Abatement Program that would require drivers of vehicles with frequent traffic violations to complete a safe vehicle operation course.	<ul style="list-style-type: none"> Conduct feasibility assessment of program Public survey and data analysis of results 	Mid-term (2-5 years)	<ul style="list-style-type: none"> Delaware Police Department SAFE Delaware County Coalition

Safe Speeds

Strategy: Promote safe speeds on all streets through targeted and context-sensitive infrastructure and policy changes.

Action Item	Progress Measure	Timeframe	Partners
Perform a city-wide evaluation of current speed limits to identify roadways where posted speed limits do not align well with current function, users, and adjacent land uses	<ul style="list-style-type: none"> • GIS analysis of speed limits • List of areas where speed limits do not align 	Short-term (0-2 years)	<ul style="list-style-type: none"> • Delaware Planning and Community Development • Delaware County Engineer's Office • Ohio Department of Transportation • Delaware Police Department
Assess speeds on strategic corridors to identify locations for safety improvements that encourage slower speeds.	<ul style="list-style-type: none"> • Collect speed violation data • Collect speed data • Identify priority locations for improvements 	Short-term (0-2 years)	<ul style="list-style-type: none"> • Delaware Police Department
Implement low-cost, quick-build safety improvements at strategic locations to pilot solutions for permanent construction.	<ul style="list-style-type: none"> • Number of low-cost projects implemented • Evaluate impacts of those projects 	Mid-term (2-5 years)	<ul style="list-style-type: none"> • Delaware Planning and Community Development • Delaware County Engineer's Office • Ohio Department of Transportation • Mid-Ohio Regional Planning Commission
Evaluate impacts of current Neighborhood Traffic Calming Program and determine if any updates to the program are needed.	<ul style="list-style-type: none"> • Conduct assessment of current program, including process for request/approval as well as appropriateness of potential countermeasures 	Mid-term (2-5 years)	<ul style="list-style-type: none"> • Delaware Planning and Community Development • Delaware Public Works
Establish local policy/procedure that requires assessment of safe and appropriate design speeds and speed limits with any new roadway or project that alters the configuration of an existing roadway.	<ul style="list-style-type: none"> • Document new procedure • Evaluate impacts 	Mid-term (2-5 years)	<ul style="list-style-type: none"> • Delaware Planning and Community Development • Delaware County Engineer's Office • Ohio Department of Transportation • Delaware Public Works
Integrate speed mitigating design concepts (roundabouts, lane striping, road diets) into current and future infrastructure projects	<ul style="list-style-type: none"> • Number of infrastructure projects with speed-mitigating design elements 	Long-term (5+ years)	<ul style="list-style-type: none"> • Delaware Planning and Community Development • Delaware County Engineer's Office • Delaware Public Works

Action Item	Progress Measure	Timeframe	Partners
Identify streets in the City of Delaware with low percentages of tree canopy and assess the feasibility of planting street trees as a traffic calming measure.	<ul style="list-style-type: none"> Identify list of streets Document feasibility of installing street trees at each location 	Short-term (0-2 years)	<ul style="list-style-type: none"> Delaware Planning and Community Development Delaware Parks and Recreation
Utilize safety education materials in lieu of fines for first-time offenders or minor-infraction offenders	<ul style="list-style-type: none"> Develop program or guidelines Create necessary materials Launch program Track impacts (number of stops made, resources shared) 	Mid-term (2-5 years)	<ul style="list-style-type: none"> Delaware Police Department SAFE Delaware County Coalition
Explore potential options for alternative approaches for traffic enforcement on strategic safety priorities.	<ul style="list-style-type: none"> Research available options 	Mid-term (2-5 years)	<ul style="list-style-type: none"> Delaware Police Department Delaware Community Affairs Delaware City Council SAFE Delaware County Coalition
Implement planning and engineering procedures to review new developments and identify possible safety countermeasures associated with proposed roadways and connections to existing roadways.	<ul style="list-style-type: none"> Document new procedure Evaluate impacts 	Mid-term (2-5 years)	<ul style="list-style-type: none"> Delaware Planning and Community Development Delaware Public Works

Safe Roads

Strategy: Design and retrofit streets to accommodate human error and reduce the severity of crashes.

Action Item	Progress Measure	Timeframe	Partners
Update the City of Delaware's Engineering Design Standards to integrate the Safe System Approach and other national best practices for safety improvements into roadway design and maintenance.	<ul style="list-style-type: none"> Updated language in Engineering Design Standards 	Short-term (0-2 years)	<ul style="list-style-type: none"> Ohio Department of Transportation Mid-Ohio Regional Planning Commission
Identify complete streets and traffic calming elements to be incorporated into new land development and capital projects as part of routine project identification and scoping.	<ul style="list-style-type: none"> Create a template project scope document for city funded and developer funded projects that identifies complete streets and traffic calming needs and solutions to be integrated into projects. 	Short-term (0-2 years)	<ul style="list-style-type: none"> Delaware Planning and Community Development
Explore the possibility of creating new roadway network connections through planned development projects to mitigate traffic bottlenecks and create maps of potential new routes.	<ul style="list-style-type: none"> Update the City's Thoroughfare Plan every two years to include these considerations. 	Mid-term (2-5 years)	<ul style="list-style-type: none"> Delaware Planning and Community Development
Evaluate the impact of Delaware's Complete Streets policy and if any changes are needed to the policy or current procedures.	<ul style="list-style-type: none"> Document the impacts of the Policy on existing procedures as well as recent/future projects 	Short-term (0-2 years)	<ul style="list-style-type: none"> Mid-Ohio Regional Planning Commission
Prioritize vehicular and pedestrian safety improvements in the City's long-range capital project planning process.	<ul style="list-style-type: none"> Keep Safety Action Plan current with priority safety projects and integrate those projects into other city planning documents where applicable. Identify eligible funding sources for each proposed project. 	Short-term / ongoing	<ul style="list-style-type: none"> Mid-Ohio Regional Planning Commission
Present pedestrian connectivity needs in the same way as highway connectivity needs and construct infrastructure that prioritizes pedestrian safety and accessibility.	<ul style="list-style-type: none"> Merge the Thoroughfare Plan with the City's pedestrian connectivity plan. Identify potential projects for improving high-risk locations Identify missing links in shared use path and sidewalk network for inclusion in long-range plan. 	Mid-term (2-5 years)	<ul style="list-style-type: none"> Delaware Planning and Community Development

Action Item	Progress Measure	Timeframe	Partners
Routinely conduct Road Safety Audits and Walk Audits at priority safety locations to identify appropriate engineering solutions at each location.	<ul style="list-style-type: none"> Number of Road Safety Audits and Walk Audits conducted 	Short-term / ongoing	<ul style="list-style-type: none"> Delaware Public Health District Mid-Ohio Regional Planning Commission SAFE Delaware County Coalition
Implement temporary/demonstration projects based on Road Safety Audit and/or Walk Audit findings to test solutions and collect feedback.	<ul style="list-style-type: none"> Demonstration projects implemented 	Long-term (5+ years)	<ul style="list-style-type: none"> Delaware Public Health District Mid-Ohio Regional Planning Commission SAFE Delaware County Coalition
Identify locations where poor street lighting is contributing to crashes and/or pedestrian safety concerns and work with the appropriate agencies to improve lighting conditions in these areas.	<ul style="list-style-type: none"> Maps of areas with poor street lighting Number of lighting improvement projects in identified areas 	Short-term (0-2 years)	<ul style="list-style-type: none"> Delaware County Engineer's Office Delaware Public Works Delaware Engineer's Office
Collaborate with partners to secure grant funding for financially intensive projects.	<ul style="list-style-type: none"> Number of grant applications submitted Total amount of money won through grants 	Short-term / Ongoing	<ul style="list-style-type: none"> Mid-Ohio Regional Planning Commission Ohio Department of Transportation
Identify locations with deficient geometry and need for safety improvements to mitigate roadway departure and pedestrian-involved crashes.	<ul style="list-style-type: none"> Evaluate all arterial and collector street intersections with substandard geometry. Add all intersections with deficient geometry to the City's Thoroughfare Plan as a needed improvement. 	Mid-term (2-5 years)	<ul style="list-style-type: none"> Ohio Department of Transportation
Identify intersections with deficient geometry and assess potential for implementing roundabouts.	<ul style="list-style-type: none"> Create map of potential locations Conduct feasibility assessments 	Mid-term (2-5 years)	<ul style="list-style-type: none"> Ohio Department of Transportation

Post-Crash Care

Strategy: Mitigate the severity of crashes by improving emergency services and preventing secondary crashes.

Action Item	Progress Measure	Timeframe	Partners
Work with local emergency response teams and hospital systems to find areas for improvement for first responders.	<ul style="list-style-type: none"> Document current state of emergency response for traffic crashes Identify potential areas for improvement 	Mid-term (2-5 years)	<ul style="list-style-type: none"> Delaware Police Department Delaware Fire Department Delaware County 911 Center Delaware County EMS
Promote and raise awareness of "Move Over" law and safe driving tips regarding behavior around crashes.	<ul style="list-style-type: none"> Determine needs Promote appropriate messaging 	Short-term (0-2 years)	<ul style="list-style-type: none"> Delaware Police Department Delaware Fire Department Delaware Community Affairs SAFE Delaware County Coalition
Evaluate current procedures for traffic incident management and any needs or potential for improvement	<ul style="list-style-type: none"> Assessment of current procedures Collaboration with partners 	Short-term (0-2 years)	<ul style="list-style-type: none"> Delaware Police Department Delaware Fire Department
Integrate traffic incident management needs into local roadway planning and design.	<ul style="list-style-type: none"> Updated standards for roadway planning and design. 	Long-term (5+ years)	<ul style="list-style-type: none"> Delaware Police Department Delaware Fire Department Ohio Department of Transportation
Collect and analyze traffic incident management data such as roadway clearance time and incident clearance time.	<ul style="list-style-type: none"> Document traffic incident management data and identify areas for improvement. 	Short-term / ongoing	<ul style="list-style-type: none"> Delaware Police Department Delaware Fire Department
Promote collaboration between Delaware County Emergency Management, local hospitals, and transportation officials to create a hotline for non-emergency assistance.	<ul style="list-style-type: none"> Create a committee/task force to determine needs Creation and implementation of hotline 	Long-term (5+ years)	<ul style="list-style-type: none"> Hospital systems in/adjacent to Delaware Delaware County 911 Center Delaware County EMS Delaware Police Department Delaware Fire Department
Enhance and expand traffic signal pre-emption at key locations and ensure that all emergency vehicles are equipped with appropriate equipment.	<ul style="list-style-type: none"> Document current state of emergency vehicle pre-emption at signalized intersections Identify needs for improvement 	Long-term (5+ years)	<ul style="list-style-type: none"> Delaware Police Department Delaware Fire Department
Improve access to counseling services to mitigate the psychological impact of crashes on children and families.	<ul style="list-style-type: none"> Number of children and families who utilize counseling services 	Long-term (5+ years)	<ul style="list-style-type: none"> SAFE Delaware County Coalition Delaware Public Health District

Safe Vehicles

Strategy: Explore opportunities to prevent severe crashes using innovative technologies in City fleet vehicles.

Action Item	Progress Measure	Timeframe	Partners
Implement policy requiring all vehicles purchased by the City of Delaware to be equipped with a standard suite of driver assistance features.	<ul style="list-style-type: none"> Policy passed/implemented 	Mid-term (2-5 years)	<ul style="list-style-type: none"> Delaware City Council
Explore options to upgrade current vehicles with advanced safety equipment.	<ul style="list-style-type: none"> Research options available for upgrading City-owned vehicles Identify funding opportunities to make upgrades 	Long-term (5+ years)	<ul style="list-style-type: none"> Delaware Public Works
Explore potential for implementing Intelligent Speed Assistance on City fleet vehicles.	<ul style="list-style-type: none"> Number of City-owned vehicles that undergo speed limiter installation 	Mid-term (2-5 years)	<ul style="list-style-type: none"> Delaware Public Works
Create a Maintenance and Vehicle Fleet Committee to determine best practices for fleet vehicle safety improvements.	<ul style="list-style-type: none"> Establish committee/task force Identify and document recommendations 	Mid-term (2-5 years)	<ul style="list-style-type: none"> Delaware Public Works
Develop a Future Livability Plan to address safety policies in regard to emerging technologies and other related challenges and opportunities.	<ul style="list-style-type: none"> Document strategies 	Mid-term (2-5 years)	<ul style="list-style-type: none"> Mid-Ohio Regional Planning Commission