



The Main Street tree finds its home for the holiday season

CITY OF DELAWARE QUARTERLY NEWSLETTER

Levy ‘Critical’ Investment for Delaware’s Future

Council votes to place tax levy on Spring 2024 ballot

Following several months of public debate and discussion, Delaware City Council in November voted to place an income tax levy on the Spring 2024 ballot.

The City Council was unanimously in favor of asking City of Delaware citizens to vote on the issue in the March primary election.

“This is critical for our City and is an important investment we need to make,”

City Manager Tom Homan said at the Nov. 13 Council meeting. “It will ultimately be up to the citizens to answer the question, yes or no, on the ballot.”

Voters will see two issues on the ballot, but only one new tax: A 5-year, 0.35 percent income tax increase that would primarily support street and alley maintenance, capital infrastructure upkeep and Municipal Court operations. The other issue is a continuation of the 0.15 percent parks and recreation tax that was approved in 2008, with one change. Funds

could go toward general parks and recreation uses, such as programs and upgrades, unlike the current 0.15 tax that can only pay down debt on the recreation center and park improvements.

If both issues are approved by voters, the municipal income tax rate would rise from 1.85 to 2.20 percent, beginning in 2025. The 0.35 additional tax would fall off in 2030, unless re-approved by voters. The total amount had originally been

Continued on Page 4

Traffic Pattern Changes Highlight Point Project’s Next Phase

The Point intersection improvement project in November began an important phase that will be in place through April 2024. A traffic pattern change took place east of the railroad bridge that allows crews to reconstruct the eastbound lanes of US 36/Ohio 37.

Traffic has been reduced to one lane in each direction between the railroad bridge and Sky View Lane/Glenwood Commons for the next phase of construc-

tion. Eastbound traffic is shifted north, with both directions of traffic maintained in the existing westbound lanes. Access to driveways and property is being maintained, however left turns are restricted for driveways as well as Bowtown Road traffic during peak morning and afternoon travel times, 7-9 am and 4-6 pm.

When this phase is complete in 2024,

Continued on Page 4

INSIDE

City Manager’s Retirement

City Manager Tom Homan’s retirement next summer will end a 25-year tenure.

Page 2

Practice Makes Perfect

The snow team prepped for the snow season by conducting snowplow practice runs.

Page 3

Meet the New Planning Director

Sandra Pereira comes to Delaware from the City of Beavercreek, Ohio.

Page 3

Retiring City Manager Reflects on 25 years Leading Delaware

City Manager Tom Homan's retirement next summer will end a 25-year tenure as Delaware's longest serving city manager. He has served as the city's chief executive since 1999.

"It has been my honor and privilege to serve as City Manager," Homan said. "Delaware is a wonderful community with a strong sense of place, a rich history and citizens who take pride in living and working here. I am proud of the work our team has accomplished in partnership with our City Council, residents, businesses and community partners."

Homan has worked with four Mayors, 26 Council members and numerous department leaders. As manager, he oversees a \$70 million operating budget and approximately 400 employees responsible for the delivery of all City services, including development, human resources, public works, finance, public safety, water utilities and technology.

"I am very appreciative of the City staff



Tom Homan's retirement in July 2024 will end a 25-year tenure as Delaware's longest serving city manager. He has served as the city's chief executive since 1999.

for their diligence and dedication in the work they do every day to maintain and improve the quality of life for our community," he said.

Homan's quarter-century in Delaware is marked by transformational change, including revitalization of the historic downtown, new neighborhood development, numerous economic development

initiatives, modernization of water treatment and sanitary sewer plants and construction of the Delaware Community Center/YMCA.

Delaware's population, at almost 45,000, has increased more than 80-percent since Homan arrived at City Hall in February 1999.

"Tom has helped lead our City through many complex issues over the years while maintaining exceptional City services, ensuring our citizens enjoy a high quality of life now and in the future," Delaware Mayor Carolyn Kay Riggle said.

Homan earlier this summer announced his intention to retire next year to ensure time for the selection process. Until then he will continue to oversee the operation of the City, as directed by the City Council.

The Council early in 2024 will begin a nationwide search and selection of the next manager.

City Earns Rare 'Triple Crown' for Financial Reporting Excellence

The City of Delaware has earned the Government Finance Officers Association's prestigious Triple Crown Award for the

first time ever. It recognizes governments that have received GFOA's Certificate of Achievement for Excellence in Financial Reporting, Popular Annual Financial Reporting Award and the Distinguished Budget Presentation Award within the same fiscal year.

City Briefs

Delaware is one of only eight municipal Triple Crown winners in Ohio.

City of Delaware financial reports are accessible via the City's website.

Receive City News Via Email Inbox

Residents can receive City of Delaware news and information sent right to their email inbox. Just click the SUBSCRIBE button on the bottom of our home page and

start receiving City news on projects, programs and much more. Additionally, users can choose to be notified when meeting agendas for City boards, councils and commissions are published.

Residents Can Review SW Focus Area Plan

The City of Delaware has launched an effort to create a Southwest Focus Area Plan. The area was identified in the comprehensive plan as

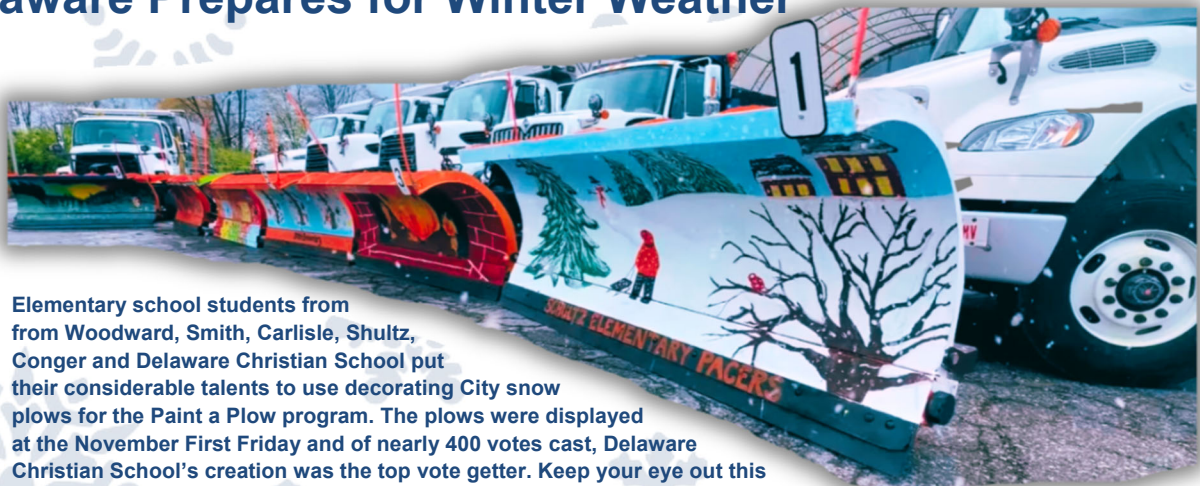
one of six areas needing special attention to help guide future land use and development decisions. The area is the industrial and business hub of the City and is home to many large and small businesses of varying specialties. This area is also a complex transportation corridor with the Delaware Municipal Airport and major industrial and commercial corridors. The plan update is viewable at DelawareOHFocusAreas.org.

City of Delaware Prepares for Winter Weather

If you saw snowplows on Delaware streets early in November, they were not responding to an actual snowstorm but were instead practicing their routes and equipment readiness.

As winter approaches, the City of Delaware snow and ice team prepares for the upcoming snow season by conducting snowplow practice runs.

Test runs are an essential part of the City's winter preparedness strategy; they help the plow drivers and support staff involved in winter weather response to respond promptly



Elementary school students from from Woodward, Smith, Carlisle, Shultz, Conger and Delaware Christian School put their considerable talents to use decorating City snowplows for the Paint a Plow program. The plows were displayed at the November First Friday and of nearly 400 votes cast, Delaware Christian School's creation was the top vote getter. Keep your eye out this winter as these plows will be on the streets clearing snow in your neighborhood.

and effectively to keep our streets clear and our community safe when a snow event does occur.

Such drills give snowplow operators the opportunity to re-familiarize themselves with equipment, routes and safety procedures to enhance their efficiency when responding to

snow and ice events. The dry runs also allow drivers and mechanics to identify and address any maintenance or operational issues with our snowplows, ensuring they are in peak condition when winter weather arrives.

As always, the City of Delaware urges everyone to exercise cau-

tion when encountering snowplows on City streets. Even when there isn't snow and ice on the ground, we ask residents to please give snowplows space to safely maneuver.

For more information on the City's winter weather response, as well as resident tips, please visit www.delawareohio.net

New Director of Planning Brings 20 Years of Experience

Sandra Pereira is the new Director of Planning and Community Development.



PEREIRA

Pereira, who spent 20 years in planning department roles within the City of Beavercreek, Ohio, started in September. Her background includes urban planning, land use development and community engagement. Pereira will play a pivotal role in shaping Delaware's physical landscape and enhancing the quality of life for its residents.

In the Dayton suburb of Beavercreek, Pereira worked on a variety of projects including office uses in support of Wright-Patterson Air Force Base, a 120-bed hospital, and a 72-acre lifestyle center. She was also successful in optimizing the application process for zoning permits and development review.

Pereira replaces Dave Efland, who departed in August for a new opportunity with the City of Westerville.

Holiday Office Hours and Curbside Collections

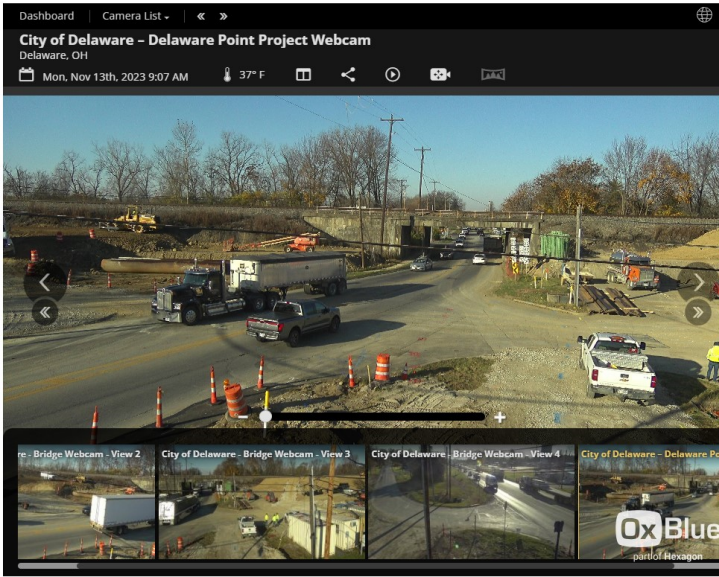
City of Delaware offices close at noon Friday, December 22 and remain closed Monday, December 25. Friday refuse will be collected on an accelerated schedule. Refuse will not be collected on Dec. 25. It will be collected on a "Next Day" schedule Tuesday, December 26 through Saturday, December 30.

Additional Refuse Bags Dec. 26-Dec. 30

For December 26-30, additional non-tagged bags of holiday refuse placed outside of the tipcarts will be collected at curbside.

New Year's Hours and Collections

City of Delaware offices are closed Monday, January 1. Refuse will not be collected on Jan. 1. It will be collected on a "Next Day" schedule Tuesday, January 2 through Saturday, January 6.



Livestream video is available at www.delawareohio.net/pointproject. Residents can track work and traffic flow at the Point improvement project.

POINT

Continued from Page 1

crews will switch to the west-bound side and begin work there.

A new webpage focused on the Point project is live on the City of Delaware website at www.delawareohio.net/pointproject. Along with new information, the page has a livestream of the project work site and a link to have Point

project updates sent to email in-boxes.

The Point intersection is where US 36 and Ohio 37 converge near the Norfolk Southern Railroad overpass. The intersection capacity is limited under the railroad bridge with only one lane in each direction compared to two lanes in each direction on both sides of the bridge.

LEVY

Continued from Page 1

proposed as a permanent increase to 2.25 percent before being reduced by Council.

An estimated \$7 million in new revenue would be generated by the new tax with a majority going to pave neighborhood streets and alleys, and to support the City's capital project program that maintains and repairs City infrastructure. The City would also make investments in economic development to grow local jobs and enhance the economic base.

New revenue would also go toward operating the Delaware Municipal Court. The Court in 2024 will require a transfer of \$1.8 million from the City's General Fund balance for its operations.

"This type of revenue gap filling is not sustainable," Homan wrote

in his proposed 2024 budget to City Council.

The court operation is the only city function that does not come under the executive and administrative authority of the city manager or city council. Both the Clerk of Court and Municipal Court Judges are elected officials, with much of their operation being prescribed by the Ohio Revised Code.

The increase would be the first tax rate change in 14 years. The city has the third lowest income tax rate among 15 suburban Central Ohio communities, but the second highest population and continues to grow.

A Financial Review Task Force, a citizen-led group that met over a 10-month period to study Delaware's financial health, supported placing a tax issue before voters.

Departments and Services

- Police, 740-203-1111 (non-emergency)
- Fire, 740-203-1300 (non-emergency)
- Recreation, Parks & Natural Resources, 740-203-1450
- Permits, 740-203-1600
- Water, Sewer & Refuse Bills, 740-203-1250
- Planning, 740-203-1600
- City Manager, 740-203-1010
- Airport, 740-203-1870
- Refuse, Recycling, Snow Removal, 740-203-1810
- Boards, Commissions, Committees, 740-203-1013
- Engineering, Streets, 740-203-1810
- Income Tax & Finance, 740-203-1200

City Council Members

- Carolyn Kay Riggle, At-Large, 740-203-1057
- Kent Shafer, At-Large, 740-203-1058
- Catlin Frazier, At-Large, 740-203-1056
- Linsey Griffith, 1st Ward, 740-203-1052
- Adam Haynes, 2nd Ward, 740-203-1053
- Cory Hoffman, 3rd Ward, 740-203-1054
- Kevin Rider, 4th Ward, 740-203-1055

