

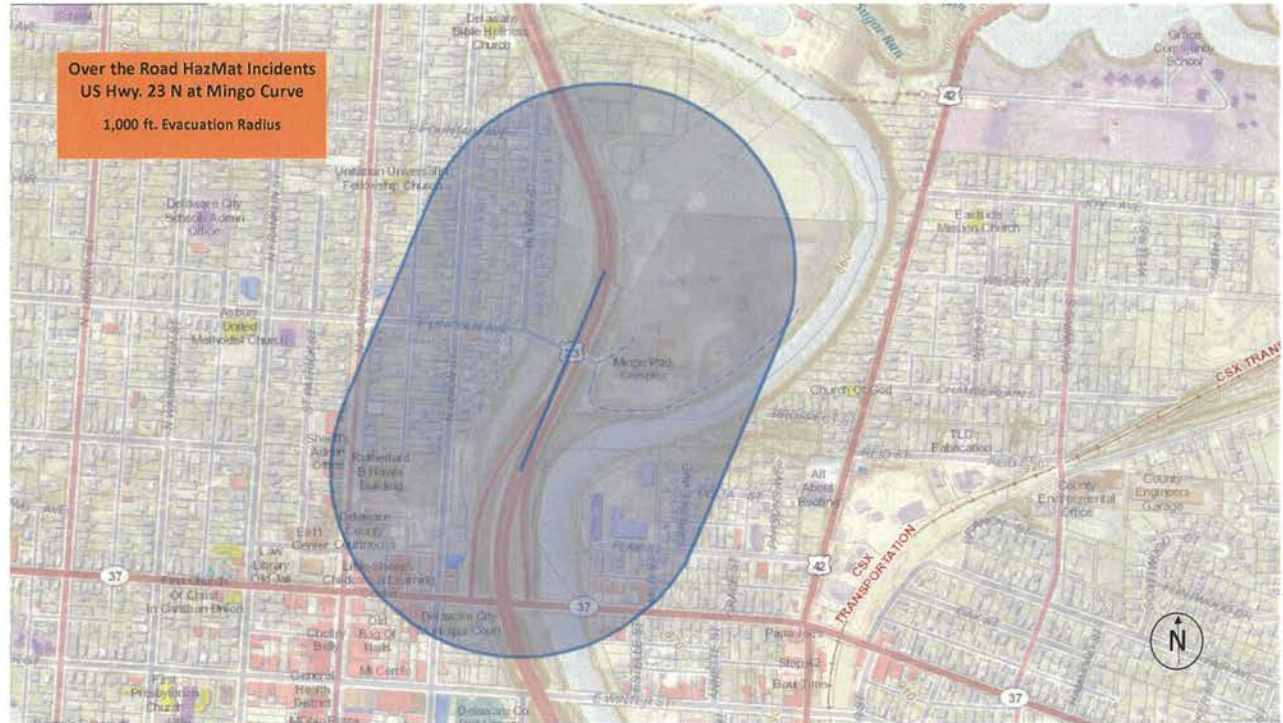
Appendix F – Hazardous Material Transportation Route Risk Analysis





Delaware County Office of Homeland Security And Emergency Management

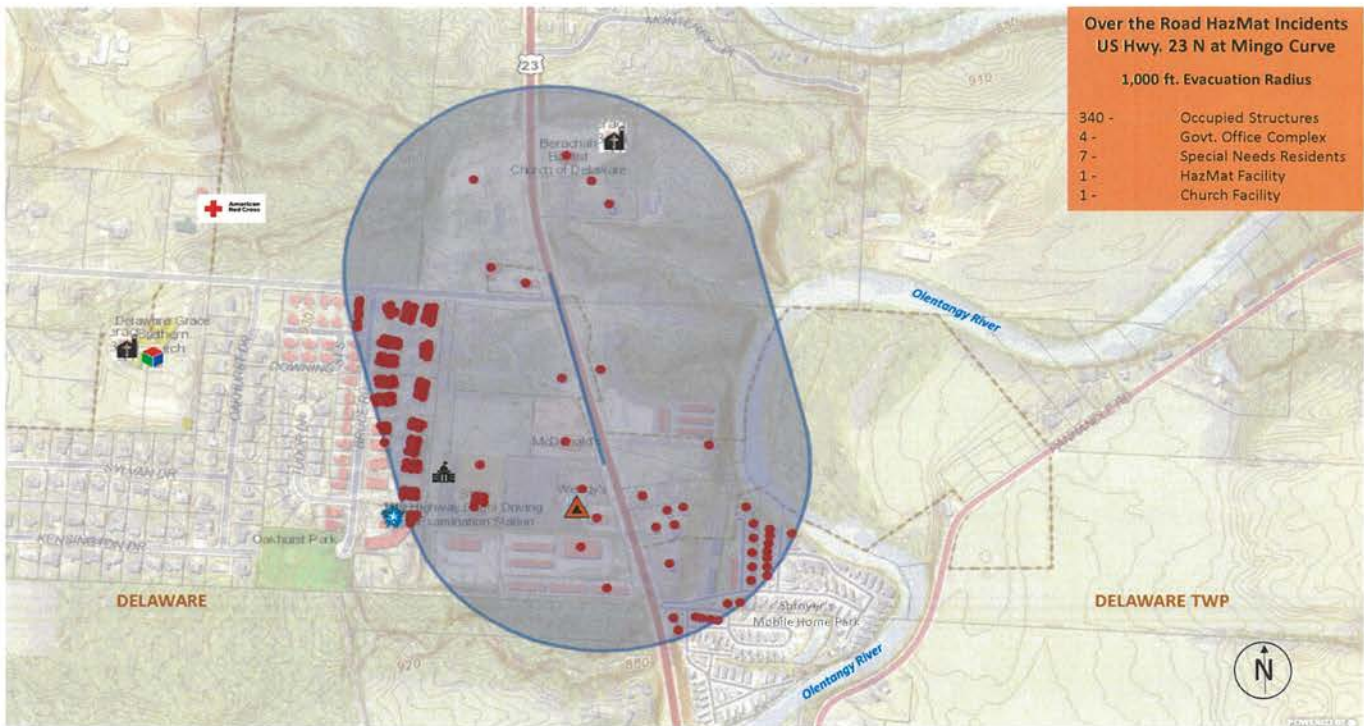
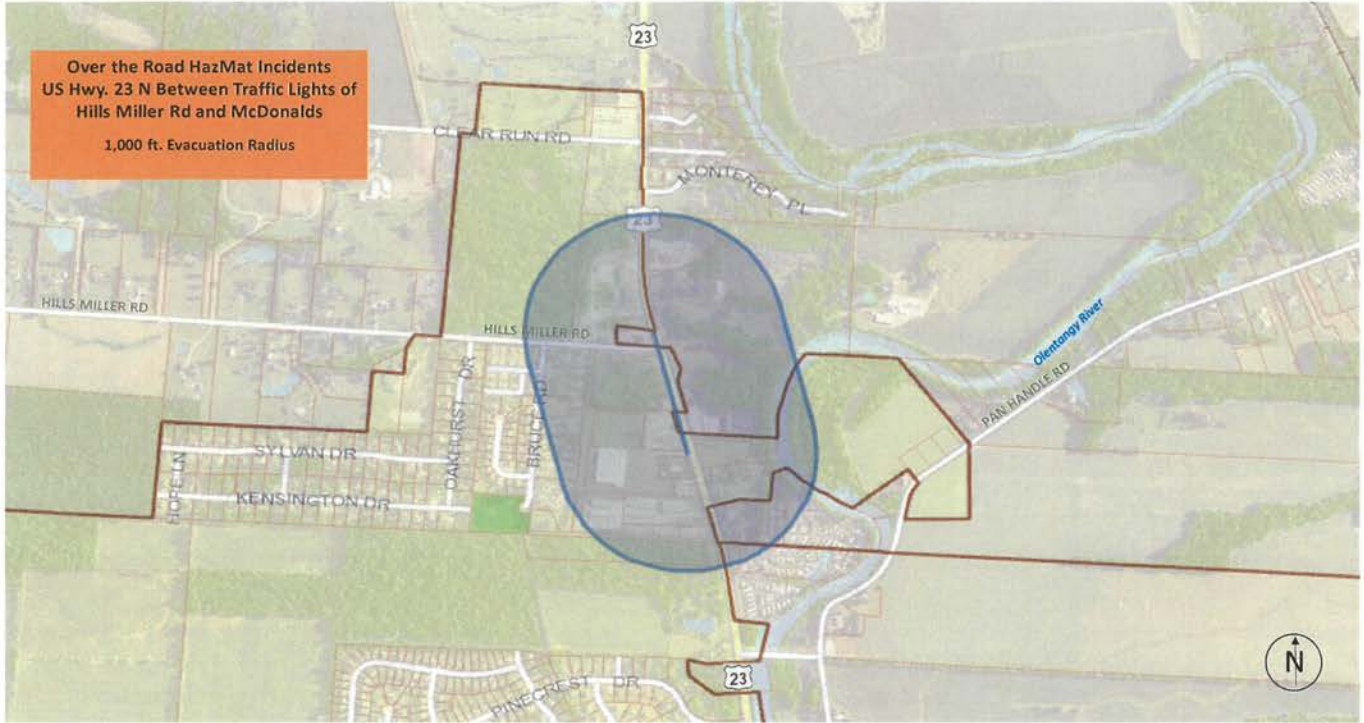
Over the Road Transportation Hazard Analysis





Delaware County Office of Homeland Security And Emergency Management

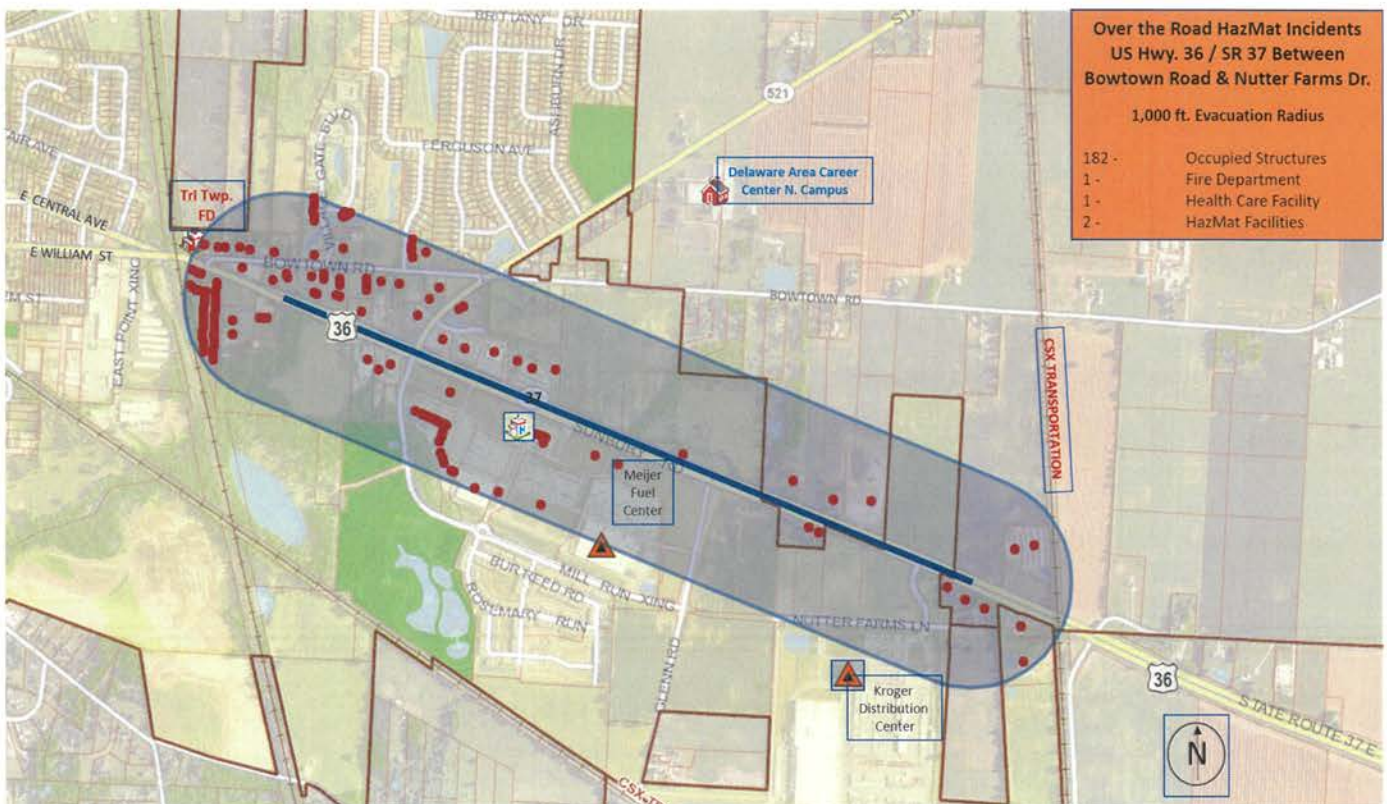
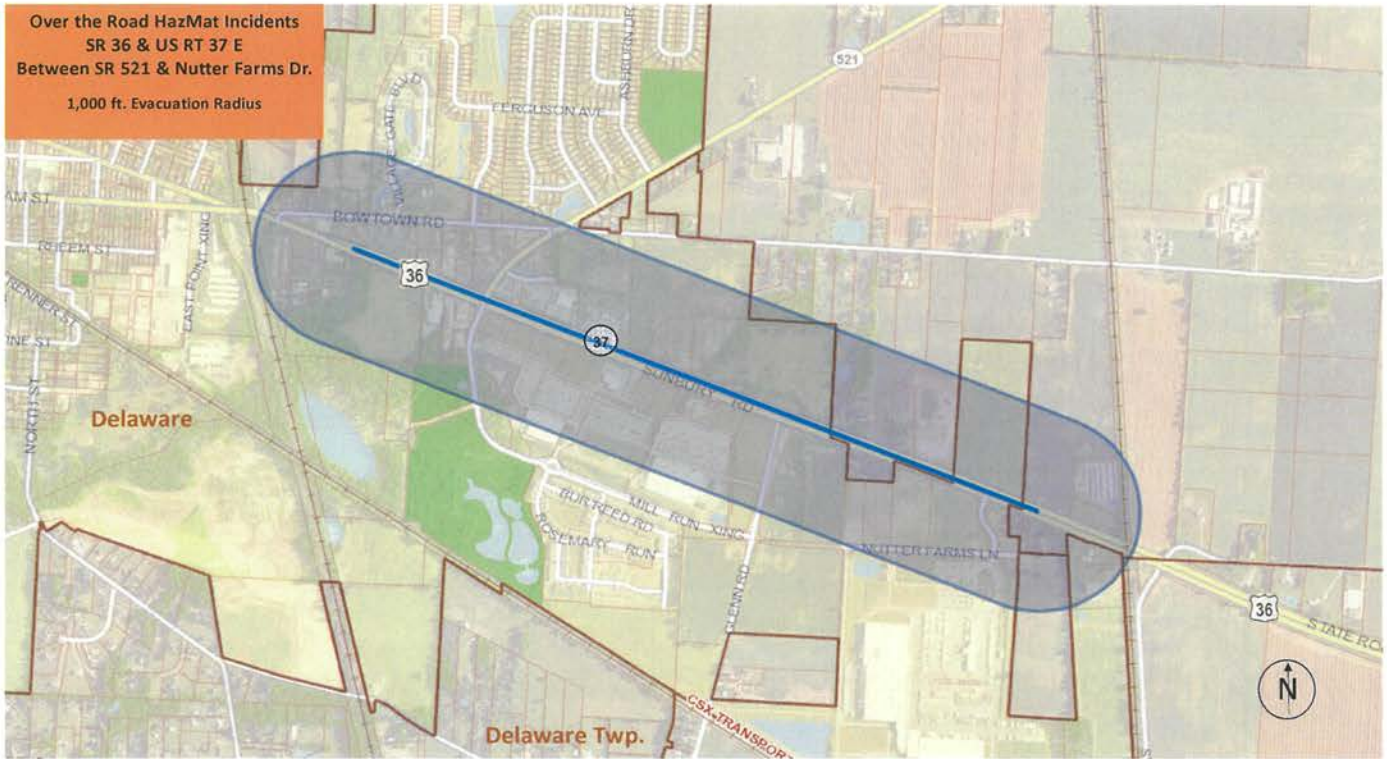
Over the Road Transportation Hazard Analysis





Delaware County Office of Homeland Security And Emergency Management

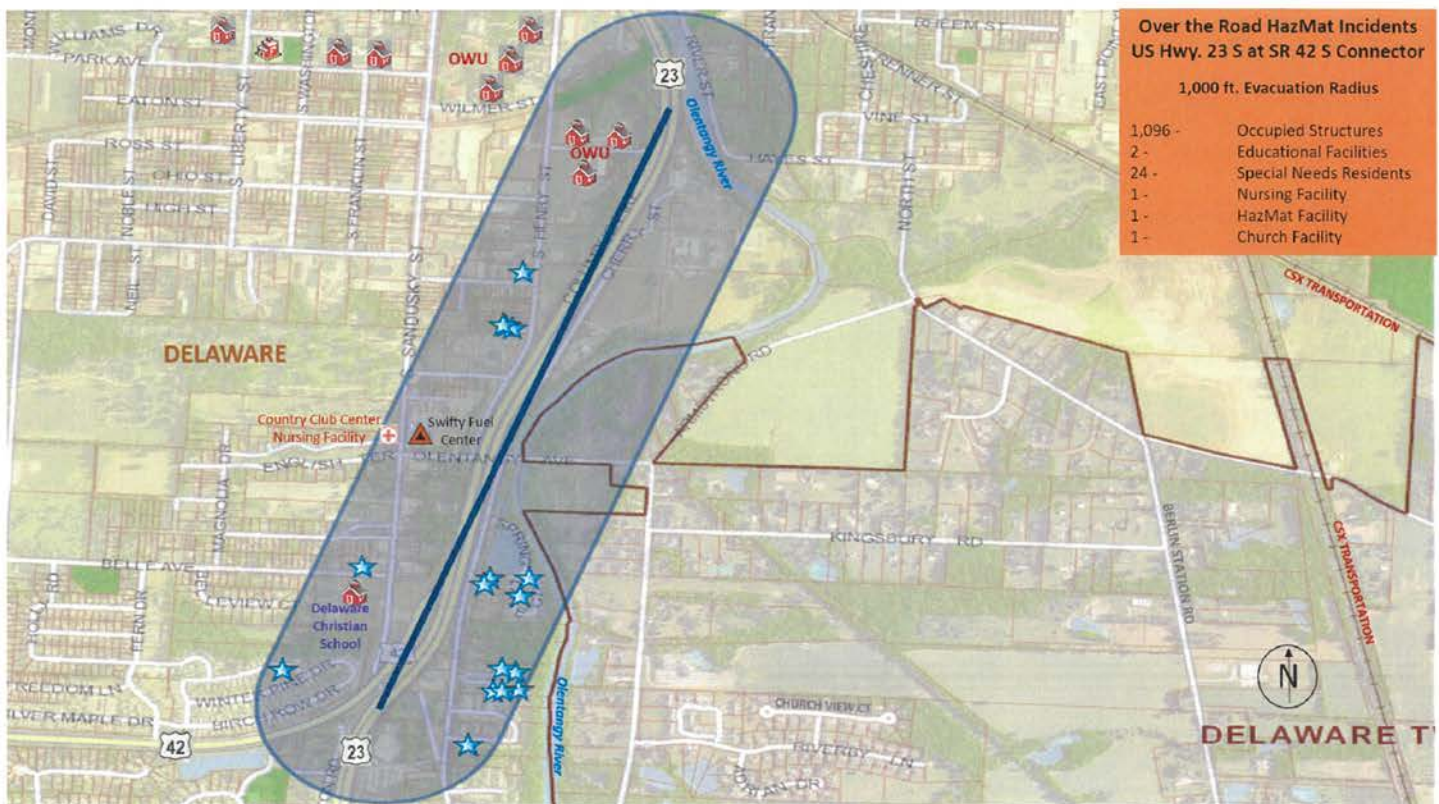
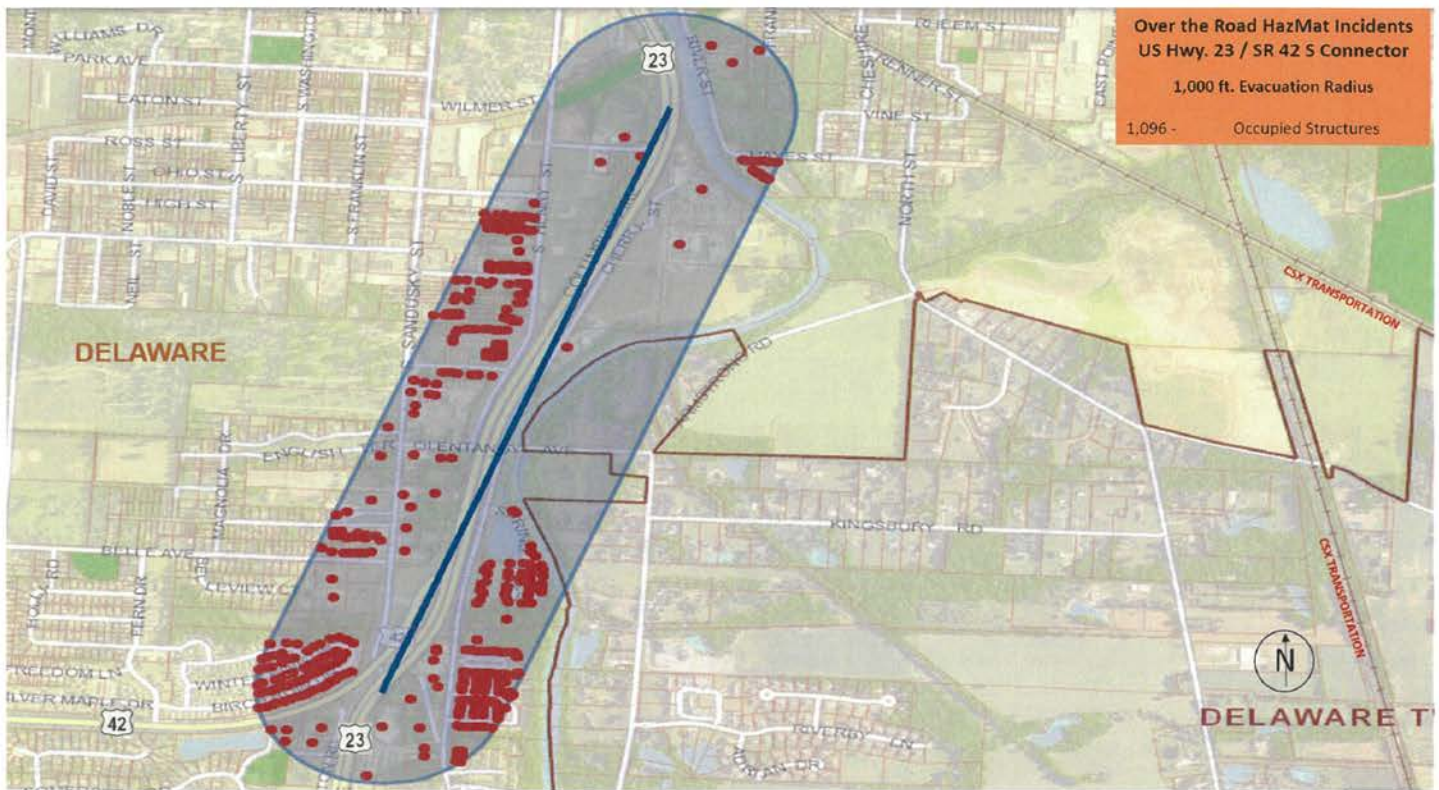
Over the Road Transportation Hazard Analysis





Delaware County Office of Homeland Security And Emergency Management

Over the Road Transportation Hazard Analysis

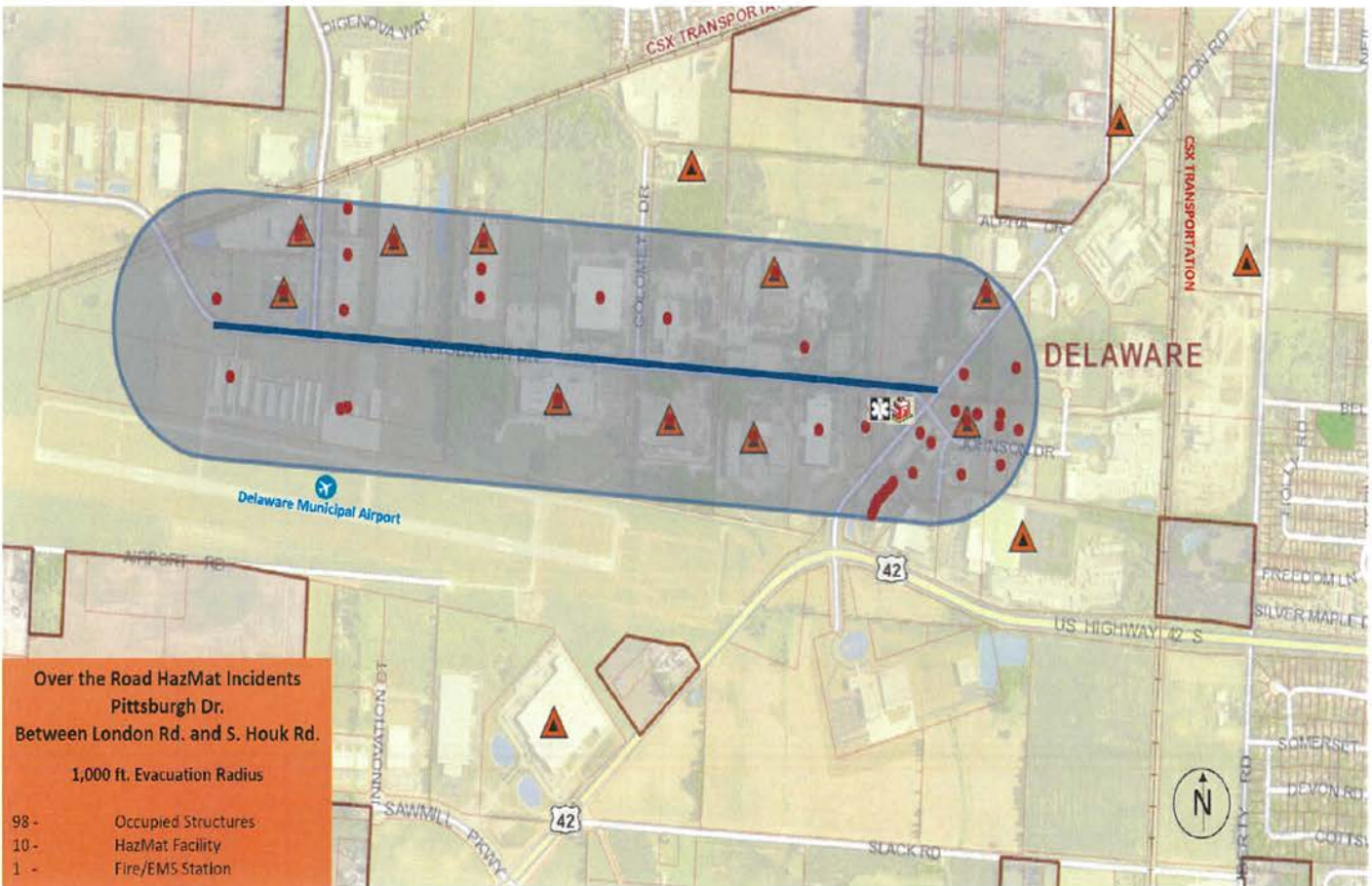
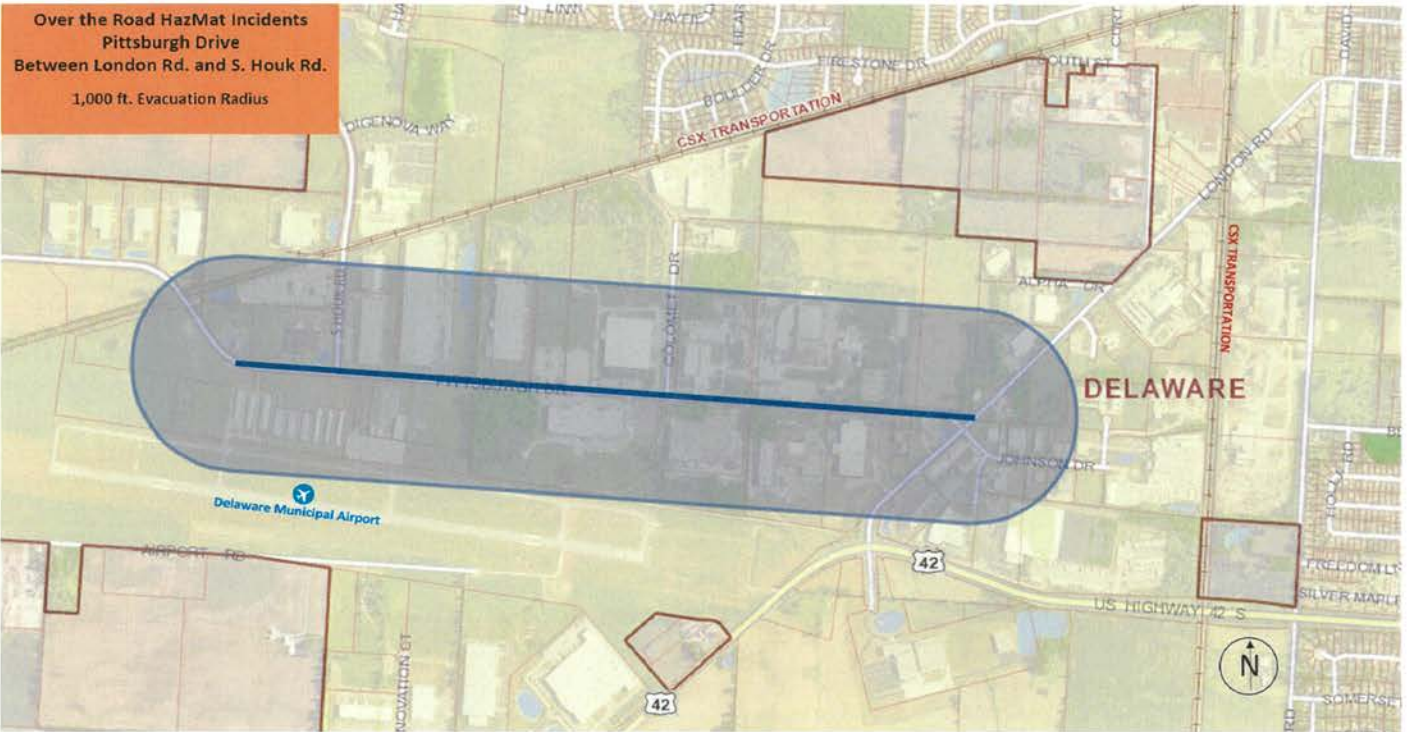




Delaware County Office of Homeland Security And Emergency Management

Over the Road Transportation Hazard Analysis

Over the Road HazMat Incidents
Pittsburgh Drive
Between London Rd. and S. Houk Rd.
1,000 ft. Evacuation Radius



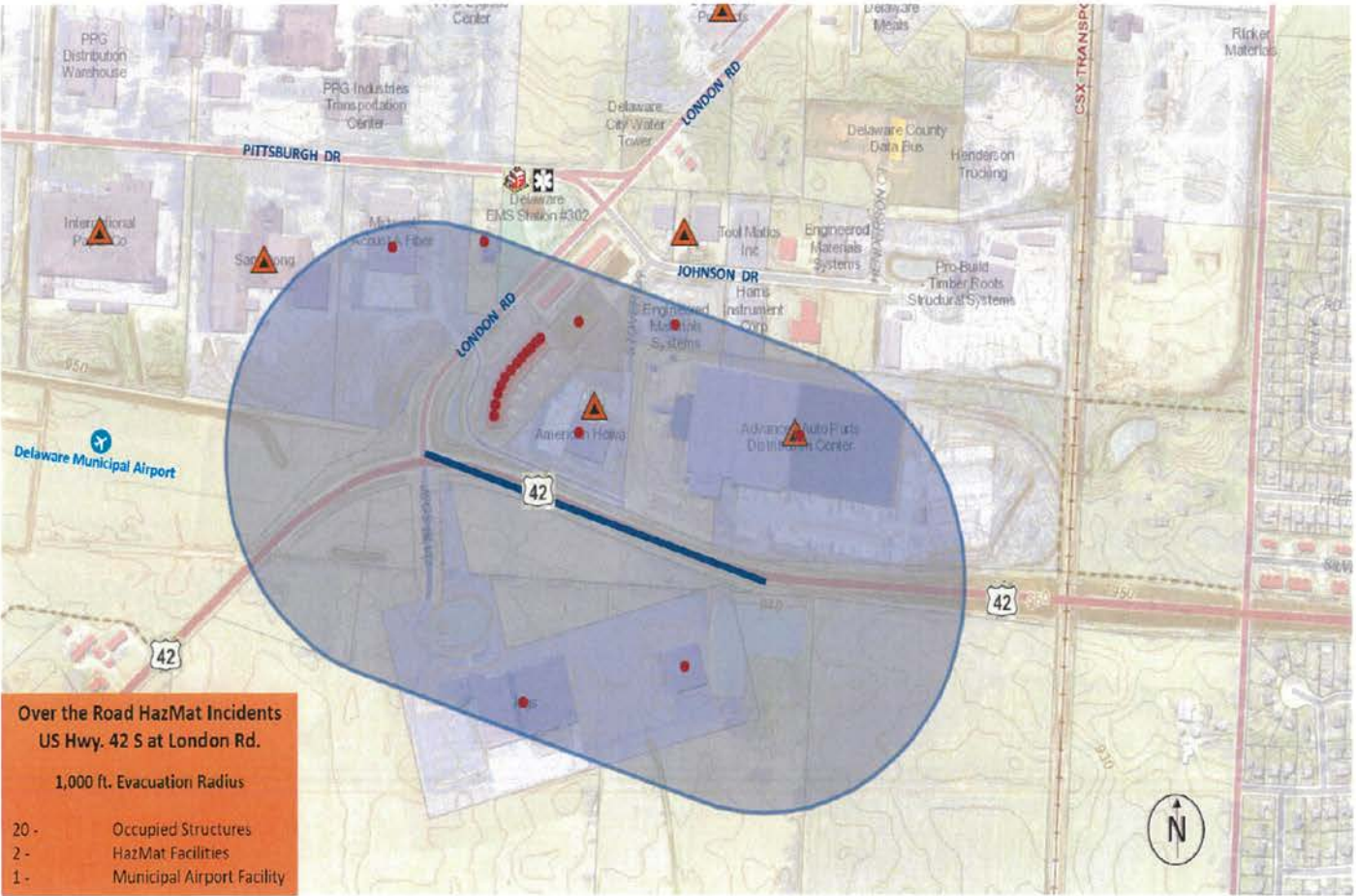
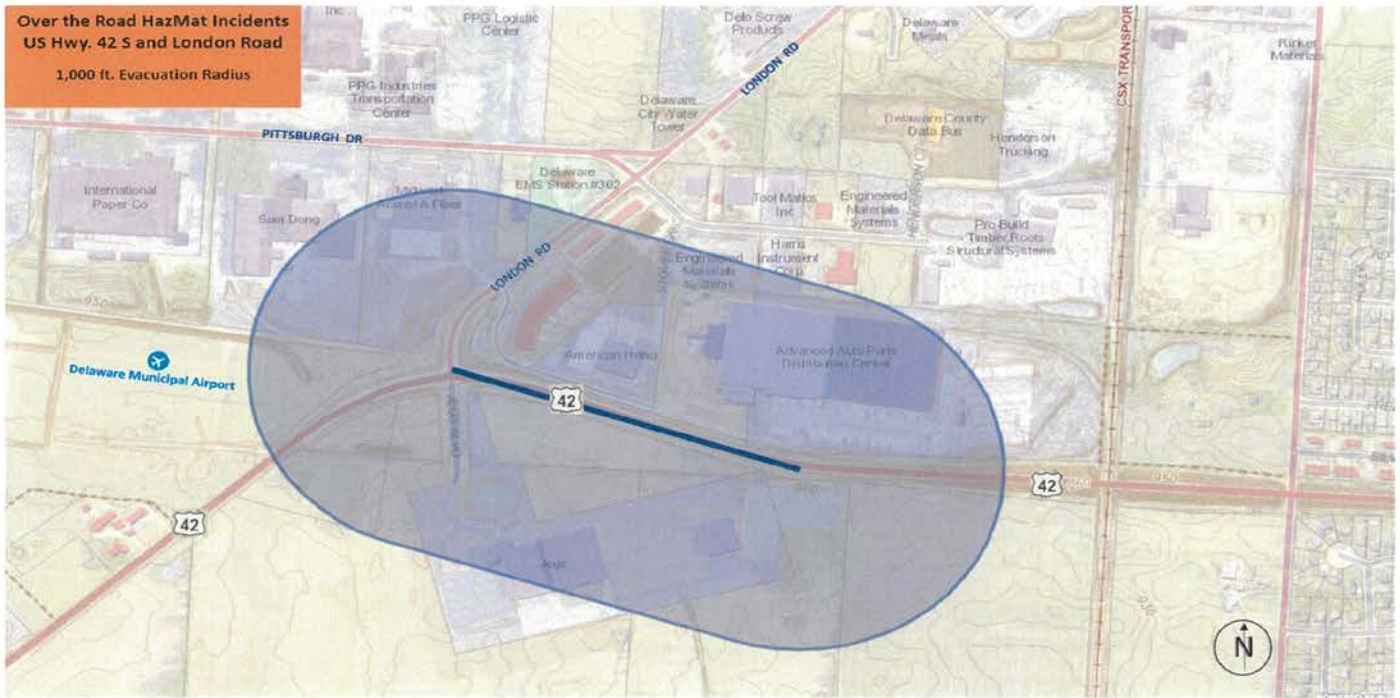
Over the Road HazMat Incidents
Pittsburgh Dr.
Between London Rd. and S. Houk Rd.
1,000 ft. Evacuation Radius

- 98 - Occupied Structures
- 10 - HazMat Facility
- 1 - Fire/EMS Station



Delaware County Office of Homeland Security And Emergency Management

Over the Road Transportation Hazard Analysis

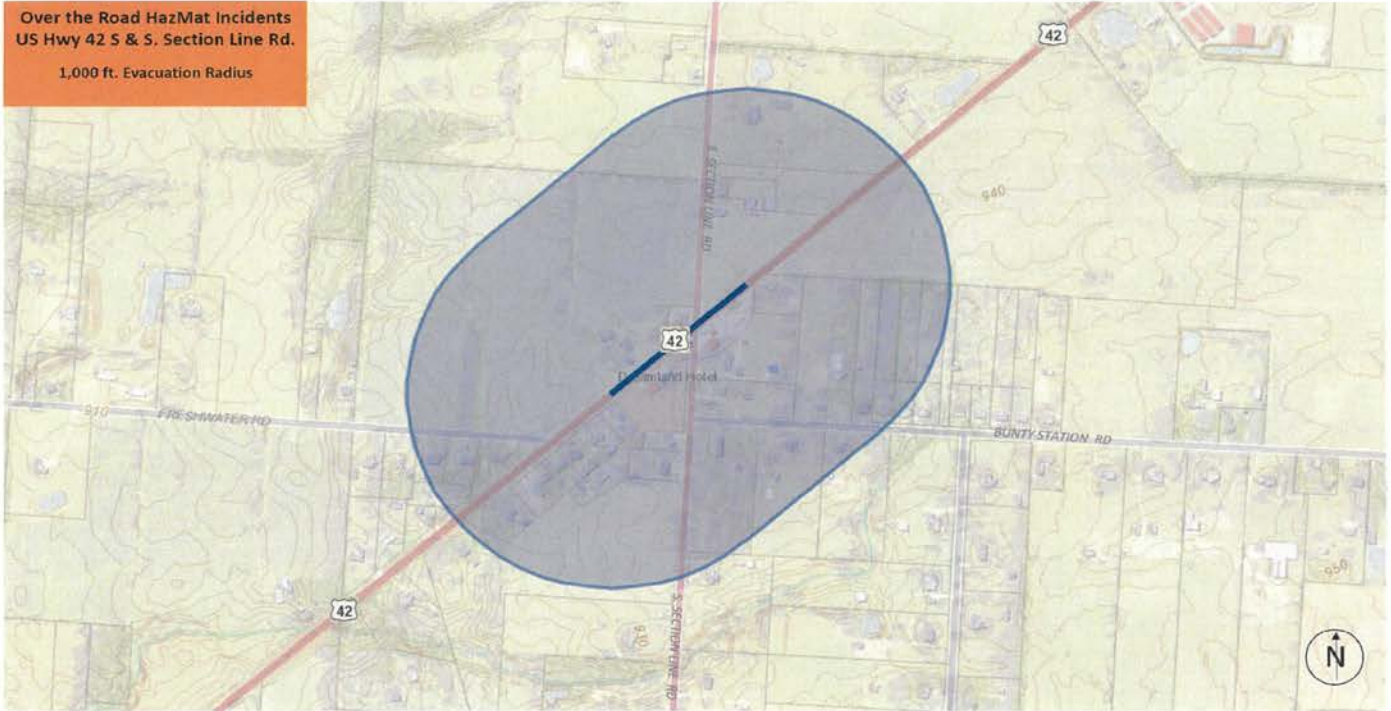




Delaware County Office of Homeland Security And Emergency Management

Over the Road Transportation Hazard Analysis

Over the Road HazMat Incidents
US Hwy 42 S & S. Section Line Rd.
1,000 ft. Evacuation Radius



Over the Road HazMat Incidents
US Hwy 42 S & S. Section Line Rd.
1,000 ft. Evacuation Radius
35 – Occupied Structures

